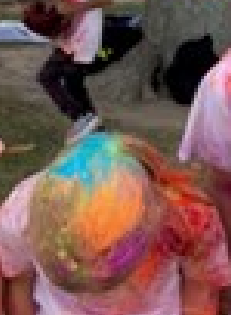


# GLENITI



So much fun was had at the Colour Walkathon!



# GLENITI SCHOOL PĀNUI



## FROM THE SWIVELY CHAIR

Kia ora e te whānau,

It's been a great couple of weeks here at kura / school since our last Newsletter. Ngā mihi nui - a huge thank you to Home & School (formerly PTA) for their outstanding organisation of February 29's Colour Walkathon. The afternoon was a huge success and so much fun for our tamariki / children and kaiako / teachers. The fundraising target is still being confirmed, but we really appreciate your support to purchase important additional literacy resources for our ākonga / learners.

It has been great to see parents / whānau into kura this week for Goal Setting Interviews. These touch base meetings at the start of the year are an important opportunity to connect and set goals. Thank you for your support with this.

Last week it was a pleasure to join our Year 6's on camp at Raincliff, as well as see the great 'Learning in Action' happening here and around our local community for the Year 5's. Our school team also represented us with pride at the South Canterbury Triathlon. Special congratulations to Arlo Muff (2nd Year 5&6 Boys) and our Year 5&6 Boys team which came third equal overall.

Next week we have Year 5-8 Swim Sports as well as the Home & School AGM. Year 7&8 Camps are just around the corner and Easter. Busy but good times!

*Mark Creba*

Tumuaki / Principal

## TOUCH FINALS

All Touch singlets to be returned to the office by Monday please unless you are using them for Year 7/8 Basketball.

## GOOD LUCK GLENITI TURBOS AND GLENITI HEAT!

Wishing our Gleniti Turbos and Gleniti Heat Touch Teams all the very best tomorrow as they compete in the A Grade and B Grade Touch Finals.

If you would like to help cheer them on, pop down to Old Boys grounds at 4.40pm and support the teams.



## WELCOME

We have recently welcomed the following new students to Gleniti School: Isla Harvey R3, Bodhi Wilson R4, Francois Le Roux R16 and Regardt Le Roux R8

## PALS WORKSHOP

Last Monday 8 Year 5-8 students went to the Southern Trust Events Centre to take part in a PALS Leadership Workshop with 130 other kids from different schools around South Canterbury. We learnt how to organise, manage and adapt games that we could teach students here at Gleniti. We learnt new games like Bump, Pirate's Treasure, Spiders and Scorpions as well as a few others. We hope we can use the skills we learnt to bring fun to the playground and teach students these new games. It was a really fun experience to be a part of.

*Anamafatua Latu and Isla Barron*



## PAID UNION MEETINGS

We advise that Paid Unions Meeting will take place on Tuesday the 26th of March. School will continue to operate as normal at this time.

## NO PARKING NOTICE

Over the past few weeks there have been numerous occasions where cars have been parking over driveways and on the yellow lines on Heath St. We ask that you are respectful to our Neighbours and do not block their driveways. As there are limited parking spaces available, we recommend that you park on Spring Road and walk up the alley way or park on Poplar Street. Please share this message with your partners, caregivers and grandparents. Thank you



# GLENITI SCHOOL PĀNUI



## GLENITI HOME AND SCHOOL



### Gleniti Home & School News

Our newsletter about your Home and School Committee!



#### Gleniti Home & School Committee AGM 2024

We will be holding our Annual General Meeting on Thursday 21st March 2024. This will be held at 7pm in the school staffroom. After this we will hold our first meeting for 2024 at 7.30pm. This is a great time to join the Home and School committee. Make connections with other parents and find out first hand what is happening in our school. As some of our current members are stepping down, we require new parents to join. Due to requirements we need 10 members to have committee, if this is not met then the Home and School will fold.



#### Roles on Home & School

**CHAIRPERSON** provides leadership for the committee, sets the agenda and manages the meeting.  
**VICE-CHAIRPERSON** will step into role of chairperson when absent.  
**TREASURER** operates the bank account, reconciles the bank statements. We work off a Work Excel template. No need to be an accountant, just be able to do online banking.  
**SECRETARY** prepares minutes of each meeting, emails copy of minutes. Recieves, writes, keeps copy of, and files all correspondence.  
**COMMITTEE** members will attend monthly meetings, share ideas, help at events.



#### Contacts

- Sarah Johnson 027 7662359
- sarahj@gleniti.school.nz
- Gleniti School 03 68 60082

#### Upcoming Events

Home and School AGM  
 Thursday 21st March  
 School Staffroom  
 7pm

#### Colour Walk

All sponsor forms are due!  
 Remember if you got your form back before 7th March, you are in the draw to win a scooter!

Thank you to the following businesses for generously donating prizes:  
 Jump In Timaru  
 Movie Max Timaru  
 CBay Timaru Aquatic Centre  
 DC Cycles Timaru



**DC CYCLES**  
 ROLL WITH THE BEST



# GLENITI SCHOOL PĀNUI



## YEAR 5 KIDS IN ACTION WEEK

Last week our Year Five students had a blast during Kids in Action Week. They visited the Geraldine Farmyard Holiday Park, played mini golf, visited the bird aviary and went swimming in Temuka as well as participating in multiple fun activities at school during the week.



# GLENITI SCHOOL PĀNUI



## *Principal Awards*



Tymon, Jaxson, Cameron, Noah



Lachie, Louis, Neave, Hayden



Mila, Mila, Miles, Frankie,  
Libby, Cameron, Marylin



Maria, Amelia, Matare, Mafana, Lucas, Daawer, Thenuli  
Emily, MeiMei, Brie, Eli, Freya, Greta, Mila, Nikolai

## *Archer in Action Awards*

## *Values Awards*



Harvey, Jordan, Zair, Olliver



Archie and Sophie



# GLENITI SCHOOL PĀNUI



## IMPORTANT DATES

Tuesday 19th March  
Year 5-8 Swimming Sports

Monday 25th - 28th of March  
Year 7/8 Camp - Rooms 13/14

Friday 29th March, Monday 1st April,  
Tuesday 2nd April  
Easter Break - School Closed

Monday 8th - Thursday 11th of April  
Year 7/8 Camp - Rooms 15/16

Friday 12th of April  
Last day of Term 1

Monday 29th of April  
First day of Term 2

Thursday 9th of May- Tuesday 21 May  
Life Education Van visiting Gleniti

Friday May 31st  
Teacher Only Day - School closed for instruction

Monday 3rd June  
Kings Birthday Public Holiday - School Closed

### Term Dates

**Term 2:** 29th April - 5th July

Friday 31 May - Teacher Only Day  
Monday 3 June - King's Birthday  
Friday 28th June - Matariki

**Term 3:** 22nd of July - 27th September

Monday 29th July - Student Led  
Conferences - school closed for instruction  
Mon, 23rd September - SC Anniversary Day

**Term 4:** 14th October - 13 December

Monday 28th October - Labour Day  
Friday 15th November - Teacher Only Day

## COMMUNITY NOTICES



You are invited to  
Glenview Kindergarten's



Friday 22nd March 2024 @ 3 to 4

Come and share your memories of  
Glenview kindergarten followed by cake  
and hot drinks.

*Mā tātou e tiaki tonu, hei kotahi ai tātou  
te hōhokotanga o te mātauranga.*

Please RSVP by 18th March to  
[glenview.kindergarten@sck.nz](mailto:glenview.kindergarten@sck.nz)

### ⚽ Northern Hearts Football 2024

#### Registrations

If your child is keen to play football for Northern  
Hearts, this season you can find all the details on  
our Facebook page - Northern Hearts AFC Juniors  
- or contact us on [nheartsjuniors@hotmail.com](mailto:nheartsjuniors@hotmail.com).

**Ages 5/6yrs ( this includes 5year olds turning 6yrs  
this year) to 13yrs. (Birth year from 2011 - 2019)**

**Registrations need to be completed by the Friday  
22nd of March.**



# GLENITI SCHOOL PĀNUI



## COMMUNITY NOTICES

We are Dynamic Developments, we would like to offer our services for Occupational Therapy, Speech and Language Therapy, Physiotherapy and Counselling. We have Therapists available for these services in the Canterbury Region. All referrals or information can be found on our website or please email [referrals@dynamicdevelopments.nz](mailto:referrals@dynamicdevelopments.nz)




**Occupational Therapy  
Speech & Language Therapy  
Physiotherapy  
Counselling**

We have specialists located across New Zealand's South Island

Our therapists travel to children in the following areas:

North, Central & South Otago  
Christchurch and Surrounds  
Dunedin  
Southland

If you have a child you would like us to see you can refer them to our team via ERMS, our website or via email.

 [referrals@dynamicdevelopments.nz](mailto:referrals@dynamicdevelopments.nz)

 [www.dynamicdevelopments.nz](http://www.dynamicdevelopments.nz)



## COUNSELLING

### WE HELP CHILDREN WITH:

- Child-Centered Therapy
- Behavioural Management
- Emotional Regulation
- Academic Support
- Anxiety and Fear
- Family Dynamics
- Grief and Loss
- Social Skills
- Parenting Guidance and Support
- Bullying
- Self Esteem and Confidence
- Managing Trauma

## OCCUPATIONAL THERAPY

### WE HELP CHILDREN WITH:

- Sensory Processing Difficulties
- Behaviour problems
- Emotional regulation
- Attention Deficit Hyperactivity Disorder (ADHD)
- Mental Health issues
- Gross and fine motor delays
- Handwriting
- Reading and writing challenges
- Specific Learning Disorders (Dyslexia, Dysgraphia)
- Autism Spectrum Disorders (ASD)
- Neurological Conditions cerebral palsy, Traumatic Brain Injury, Dyspraxia and Stroke.

## SPEECH & LANGUAGE THERAPY

### WE HELP CHILDREN WITH:

- Speech sound delays and disorders
- Language delay
- Stuttering
- Dyslexia
- Voice disorders
- Conversations and social skills
- Global developmental delay
- Literacy including phonological awareness
- Autism Spectrum disorder
- Neurodiversity
- Neurological Conditions cerebral palsy, Traumatic Brain Injury, Dyspraxia and Stroke.
- Developmental Language Disorder (DLD)
- Trauma and Attachment
- Mental Health
- Behaviour as Communication
- Selective Communicators (Selective Mustism)
- ADHD
- Intellectual Disability
- Functional Communication Skills

## PHYSIOTHERAPY

### WE HELP CHILDREN WITH:

- Balance, posture, coordination, gross motor skills that affect their ability to play and learn
- Joint, muscle, or nervous system issues that cause weakness, pain, or movement difficulties.
- Neurological conditions, such as brain injury, cerebral palsy or stroke, that affect their motor function and quality of life.
- Orthopaedic conditions, such as scoliosis or fractures.
- Developmental delays or disabilities, such as Autism Spectrum Disorder or Down syndrome
- Neurological Conditions cerebral palsy, Traumatic Brain Injury, Dyspraxia and Stroke.



**DYNAMIC DEVELOPMENTS**

### HOW TO REFER A CHILD TO US

If you have a child you think would benefit from our services you can refer them to our team via ERMS, our website or via email.



[referrals@dynamicdevelopments.nz](mailto:referrals@dynamicdevelopments.nz)



0221003994

[www.dynamicdevelopments.nz](http://www.dynamicdevelopments.nz)



# GLENITI SCHOOL PĀNUI



## COMMUNITY NOTICES

**OLD BOYS  
TIMARU**

# JOIN THE CLUB!!!

**TIMARU OLD BOYS JAB RUGBY REGISTRATION** **WEDNESDAY 13<sup>TH</sup> MARCH**

4.00pm – 6.00pm Old Boys Club Rooms, Quarry Road, Timaru  
 Subs: \$65 – 1st child | \$40 – each additional child  
 All players receive club tshirt, mouthguard & team photo

SCAN THE QR CODE TO REGISTER ONLINE

Timaru Old Boys Sports Club | [www.timaruoldboys.com](http://www.timaruoldboys.com)

**JUNIOR GRADE RUGBY**  
 5 - 13 yr olds  
 Boys & Girls

Proudly Supporting Harlequins JAB Rugby

**REGISTRATION DAYS 2024**  
 New and Existing Players  
 Thursday 7th March 4pm - 5.30pm & Sunday 10th March 10am-12pm  
 Harlequins Clubrooms - 34 Church Street, Timaru

Please bring Birth Certificate for age verification for new members

Any Spare Boots, Shorts, Socks - bring to the Rego days  
 or Please drop off to 16 Wai-iti Road, Timaru

**SUBS - \$40 plus \$20 per additional family member.**

Jerseys Supplied - Shorts & Socks available to purchase  
**FREE** Mouth Guards / Team Photos / Training Tee  
 supplied to each player when Subs Paid in Full

**EFTPOS AVAILABLE AT THE CLUBROOMS**

Under 13 End of Season Rugby Festival Tournament in Queenstown this year.  
 An exciting time ahead for this team during 2024

For any further information contact:  
 Sean Flannery 027 335 8376 or Juliette Stevenson 027 688 8114

**Check us out on FACEBOOK**

## Gleniti Scout Group

Come along and experience scouting

**Keas** - 5 to 8 years  
 meet Mondays 3.30pm to 4.45pm  
 we do outdoor activities, games, music, and crafts.

**Cubs** - 8 to 11 years  
**Scouts** 11 to 14 years  
 meet Tuesdays 6.30pm to 8.00pm

Some activities we do are hikes, weekend camps, water activities.  
 Having fun while gaining valuable leadership skills and self-confidence by doing outdoor adventures.  
 Come along and see what Scouts is all about.  
 Girls and boys welcome.  
 For more information please contact:  
 Rose ph 027 605 8419 or 686 9888



**TIMARU SQUASH CLUB**  
 22 Brunswick Street, Timaru

## HAVE-A-GO Term 1

**SMALL NIX Programme**  
 Age: 5-9 years  
 Mondays or Tuesdays  
 Starting 11<sup>th</sup> & 12<sup>th</sup> March 2024

**BIG NIX Programme**  
 Age: 9-12 years  
 (with good hand-eye coordination)  
 Mondays or Tuesdays  
 Starting 11<sup>th</sup> & 12<sup>th</sup> March 2024

**Kiwi Squash** 3:30pm-4:15pm  
 Equipment supplied  
 Non-marking CLEAN shoes please  
 These programmes run for 4 weeks

This FREE Have-A-Go opportunity will provide fun squash movement skills and activities as well as create new friendships at our club.

To register via our website: [www.sporty.co.nz/timarusquash](http://www.sporty.co.nz/timarusquash)  
 Contact: Jen Moorhead 021 685 441





# GLENITI SCHOOL PĀNUI



## COMMUNITY NOTICES

A message from HitPlay who have reached out after the recent Mash closure.

We are based in Mid-Canterbury, operating from Allenton, Hampstead & Rakaia primary schools and Mt Hutt College... We are a game and sport based programme focusing on inclusion, physical well being and teamwork and again providing the care bridge between school and home.

We have been supporting the wider Mid-Canterbury community for over 11 years. We offer Before & After School Care along with Holiday Programmes, all of our programmes are MSD approved and offer WINZ subsidy to families.

Feel free to reach out, we would be happy to support your school community where we are able, if you would like more information or to have a chat my details are below.

We would be more than happy to discuss how we can support families in your community and would welcome calls or emails from families to see how we can do this for them.

Nga mihi | Kind regards

La Tisha Richards

Managing Director

Out of School Care & Recreation | HitPlay

03 423 2270 | 021 222 7770

latisha@hitplay.co.nz

www.hitplay.co.nz

PO Box 40, Ashburton, 7740

Caroline Bay  
Rock & Hop  
2024



**KIDS SCAVENGER HUNT**  
AT THE GALA DAY

**Saturday 16th March**

**10am – 1.30pm**

**Ages 5 – 15 years.**

Hey kids, get your friends together and join the Caroline Bay Rock and Hop 2024 Scavenger Hunt. Pick up a scavenger list from the Information or Merchandise tents at the Gala Day and start searching.

**Great fun prizes to be won!**

Drop your completed lists back to the Information or Merchandise tents by 1.30pm to be in to win.

**1st Prize: Playstation 5**

Kindly donated by Nexus Services Timaru

**2nd Prize: Tablet**

Kindly donated by Heartland Containers Timaru

**1ST & 2ND PRIZE WINNERS**

**ANNOUNCED ON THE**

**MAIN STAGE AT 1.55PM**

**FREE ENTRY**

